



SAVE YOUR MEMBERSHIP ID CARD TO YOUR ANDROID PHONE



SCAN IN QUICK AND EASY – LEARN HOW

The YMCA of Greater Pittsburgh mobile app will no longer be supported starting March 4th, 2024 as we transition to a new and improved transaction system. To ensure a seamless experience, we encourage you to follow the instructions below to retain your member ID on your mobile phone:

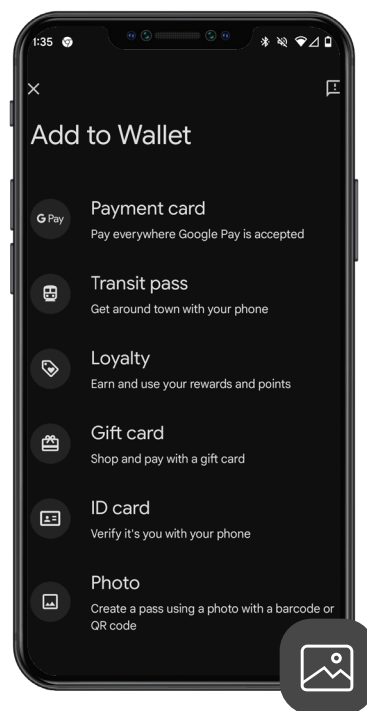
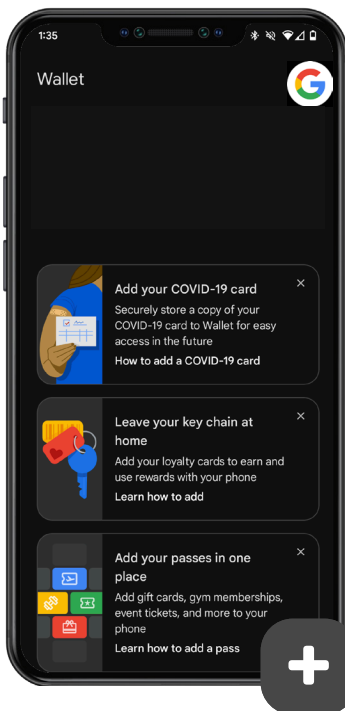
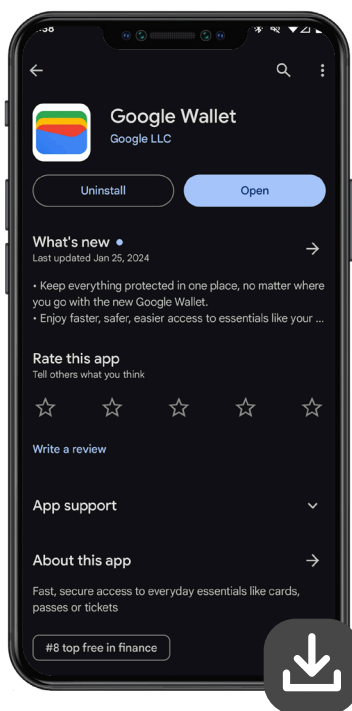
Starting March 4th, 2024, navigating through our website on your mobile device will be a breeze. Whether you're using an Android phone or an Apple iPhone, you can enjoy an optimized and user-friendly interface tailored to the palm of your hand.



Google Play



Google Wallet



Step 1: Take a photo of your current YMCA membership card, **OR** take a screenshot of your current card through the YMCA of Greater Pittsburgh mobile app, **OR** ask a Welcome Center staff member for assistance on getting a new membership ID card.

Step 2: Navigate to the 'Google Play Store' and Download the free 'Google Wallet' app.

If you already have the 'Google Wallet' app downloaded, please open the app

Step 3: With the 'Google Wallet' app open, scroll to the bottom where it says 'Add your passes in one place' and click on the graphic.

Step 4: On the next screen in 'Google Wallet', scroll to the bottom to 'Photo' and click on the plus sign to the right to add a photo of your YMCA member ID card.

We understand that change can be challenging, but this transition allows us to provide you with an enhanced and more efficient service. We appreciate your cooperation and understanding during this process.

If you have any concerns or need assistance, feel free to contact our Member Services team. Thank you for being a valued member of the YMCA of Greater Pittsburgh community.

LEARN MORE AT pittsburghymca.org/mobile

android